



LSM SST

LSM SST (Lamella Settler Module in Stainless Steel)

Is a lamellar pack obtained from assembly of parallel flat sheets made of stainless steel fixed on a suitable frame to guarantee the desired inclination.

Design

LSM lamellar packs can be made of different sizes and inclinations to perform both sedimentation and oil separation treatments.

It is possible to supply an accessory metal carpentry (support systems, bulkheads and pluggings sheets) in order to adapt the product to any kind of plant and tank (rectangular, circular, etc.)

Main applications:

The particular stainless steel characteristic enable the use of this product in case there is the need of maximizing the durability of the product or in the highly conditioned wastewaters presence.

The most common applications are as follow :

- ❖ primary and secondary sedimentators in sewage treatment plants;
- ❖ clariflocculators;
- ❖ sedimentators in potable water plants;
- ❖ oil separation systems

Benefits:

- ❖ Corrosion resistance
- ❖ high temperature resistance
- ❖ Minimum cleaning and maintenance costs
- ❖ High mechanical strength
- ❖ High durability
- ❖ Low risk of clogging

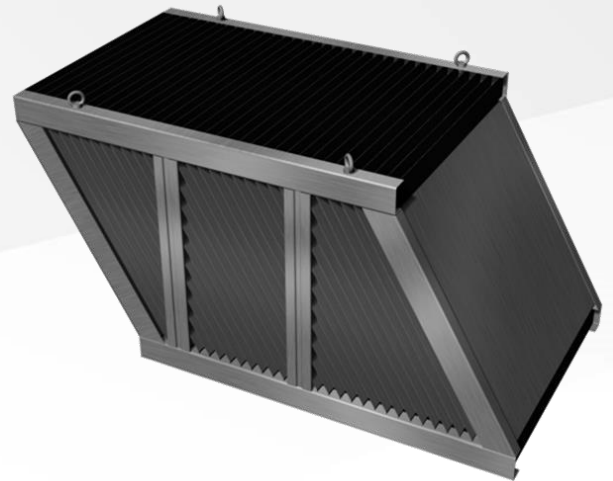


Fig. 1 – Lamella settler LSM SST



Fig. 2 – Photo LSM SST



Sizes and assembly :

LSM SST can be made in standard or customized sizes as the sheets dimensions change depending on the tanks.

The production can be in AISI 304 steel and, on request, in AISI 316L which is particularly aggressive environments.

The standard frame thickness is mm 8/10 for the plates and 30/10 mm for the frame which is still customizable on request.

The sheets assembling with frames is done with spot welding and guarantees is total solidity and integrity of the product finished.

Standard dimensions of lamellar modules LSM SST

Usage	Width [mm]	Inclination	Length [mm]	Height [mm]	Pitch [mm]	Projected surface [m ² /m ³]
sedimentator	1.000 - 1.250	60°	max 2.000	1.000 - 1.300	42	10,0 ca.
Oil separator	1.000 - 1.250	45°	max 2.000	1.000	35	16,5 ca.

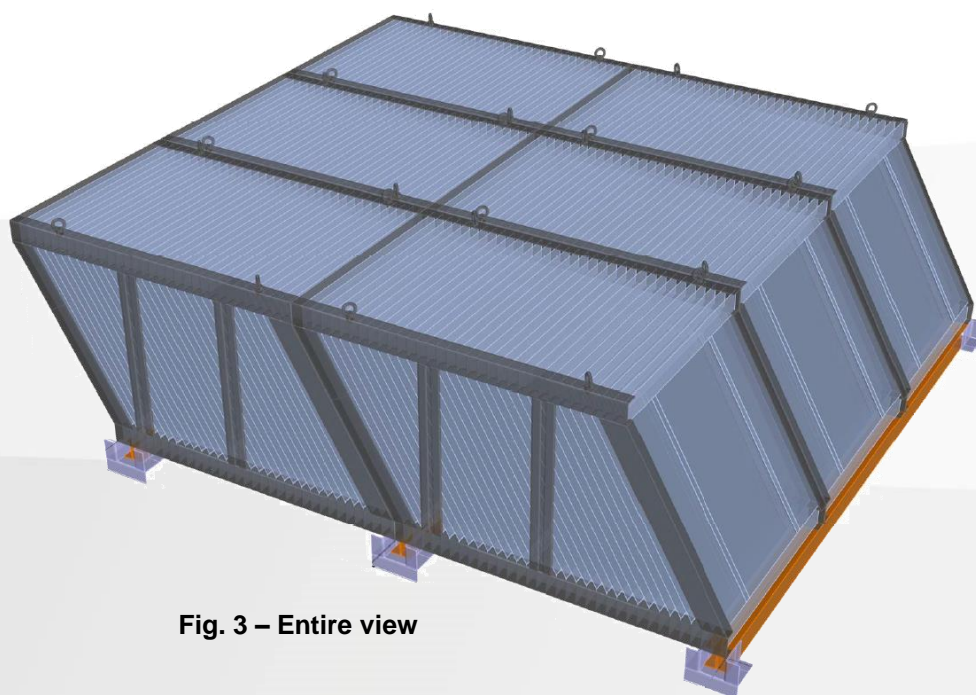


Fig. 3 – Entire view



Figure. 4 - Containment and Lifting Frames:

In order to simplify operations of maintenance and installation, modules are also supplied with containment frames in Aisi 304 or Aisi 316 L , cut to size and equipped with lifting hooks.